

GTP Product Lines

Why Global Telecom Partners

- GTP is an extension of the manufacturer working directly with the subject matter experts
- One place for all related technology needs
- Product lines with distinct synergies to solve problems
- Solutions fit together as complete solutions and/or complement existing solutions
- Over 150 years of real world expertise in all areas

Product Line Contents

- [Lab Solutions](#)
 - Traffic Simulation
 - Traffic Impairment
 - Traffic Analysis
 - Automation
- [Fiber Solutions](#)
 - Hand tools
 - Test Solutions
 - Infrastructure – MDU, SFU
 - GPON Analysis Solutions
 - RF over Fiber
- [Outside Plant](#)
 - Fiber Cabling
 - Custom Signs
 - Pedestals, raceways, identification, enclosures
- [Network Equipment](#)
 - Timing Solutions
 - Packet Brokers
 - Network Monitoring – Service Level
 - Analog and digital equipment
- [Wireless](#)
 - Composite Poles
 - RF Analyzers
 - Network Simulation
- Applications
 - [Fiber Product Application](#)
 - [Lab Automation, end point testing, UE testing](#)
 - [Enterprise Monitoring](#)

Subscribe and follow us below



201-618-7629

kevins@gt.partners

www.gt.partners

Product Line List - Lab

Click on logo for vendor website



Wireless and Wireline Simulation, Emulation, and Conformance

- Conformance, feature, and load testing for VoIP, Wireless, and next generation networks (NGN).
- 2-5G Test Solutions for Wireless – Full Network Coverage
- UE Emulation, VoLTE Testing, IMS, RCS, PSTN, SIP



IP Network Emulators

- Reproduce the unfavorable conditions of IP Networks and WANs
 - Controllable and Repeatable lab environment.
- Recreates the dynamic behavior of the Internet such that any network model can be reproduced including those models



The new SAGE **Universal Cellular Test Tool** (UCTT)

- Next Gen Test Solution for 3G, 4G, 5G
- One box for BTS, RN, or Node B



Layer 1 Switch for full lab automation:

- Up to 256 QSFP28 or 1024 SFP28; 1GB to 100GB; Protocol Agnostic
- Works with automation suites, reduces CAPEX
- Port-to-port Latency: less than 10ns (100Gbps)



Optical fiber spool solutions for network and link simulation

- Latency and optical time delay spools/coils
- OTDR training spool solutions with built-in events
- OTDR launch fibers



IP Load Simulation

- Layer 2-7 Gigabit Ethernet traffic generation and analysis test equipment
- Competitive priced, full featured traffic simulation solution – 1-100Gbps

Subscribe and follow us below



201-618-7629

kevins@gt.partners

www.gt.partners

Product Line List – Fiber Solutions

Click on logo for vendor website



Fiber Cleaning Solutions:

- Industry leading in fiber cleaning
 - Swabs, wipes, spray, kits
- Tools for all interfaces types



Fiber/Copper test and installation solutions:

- Both fiber and copper install kits
- Cable, wifi, fiber test tools
- Ethernet test and analysis solutions



Fiber Test Solutions:

- Fiber Troubleshooting tools
 - Power meters, visual fault locators
- Military Grade



GPON Analysis and Verification Solutions

- Analysis on GPON and NG PON links
- Verification of GPON installations
- Variety of form factors



RF over Fiber Solutions

- High performance Analog RF to fiber transport
- Remote antenna, radar, government, broadcast, satellite applications

Subscribe and follow us below



201-618-7629

kevins@gt.partners

www.gt.partners

Product Line List – Outside Plant

Click on logo for vendor website



OEM Solutions upgrades (IBM, Dell, HP, Cisco, etc)

- SFPs, memory, SSD, cables (Bend Fiber)
Does **NOT VOID** warranty
Huge cost savings



Wiring products

- Pedestals, raceways, identification, enclosers
- Raceway on a reel
- Quality solutions



Custom Signage

- High quality products with long warranty
- Security Compliance monitoring built into all products
- Customer portal for quick design



Multifunction Handheld Test Solution

- PTP Clocks, 10GB, C.37.93
- Legacy interfaces – T1/E1, Serial, IRIG B



Grounding and Cathodic Protection Solutions

- Corrosion proof, easy installation, improved network reliability
- Environmentally friendly

Subscribe and follow us below



201-618-7629

kevins@globaltelecompartners.com

Product Line List – Network Equipment

Click on logo for vendor website



Network Time Solutions

- Modular design to fit many network applications
- End to end quality and industry leading engineering



Network Tap, Packet Brokers, and Session Master

- Aggregation/Distribution, Header Modification
- Session-Aware Load Balancing
- Software based solution



Field Worker Communication and Business Process Management

- Crisis management and disaster recovery
- Mission Critical Communications for all relevant personnel



VoIP Fraud, Security, Troubleshooting and analytics

- Realtime VoIP monitoring
- Multi-tenant capabilities



Analog and digital products

- Analog and digital modems
- Routers and microwave solutions

Subscribe and follow us below



201-618-7629

kevins@gt.partners

www.gt.partners

Product Line List – Wireless

Click on logo for vendor website



Designer and builder of RF Communications

- P25 Motorola Combiners
- Tower Top Amplifiers (TTA), all vendors
- RF Components



RS Composite Poles

- Aggregation/Distribution, Header Modification
- Session-Aware Load Balancing
- VXLAN/NVGRE/GENEVE Tunneling Support



The new SAGE **Universal Cellular Test Tool (UCTT)**

- Next Gen Test Solution for 3G, 4G, 5G
- One box for BTS, RN, or Node B



Wireless and Wireline Simulation, Emulation, and Conformance

- Conformance, feature, and load testing for VoIP, Wireless, and next generation networks (NGN).
- 2-5G Test Solutions for Wireless – Full Network Coverage
- UE Emulation, VoLTE Testing, IMS, RCS, PSTN, SIP



Wireless and Wireline Products

- M2M IoT Solutions – 4g Router
- Wireless bridges, ethernet switches
- Variety of applications – Transportation, Enterprise, Carrier



Carrier-wide reporting, troubleshooting and analysis

- Deep-packet inspection, infrastructure and resource monitoring,
- Service level monitoring – LTE, 5G, VoIP, SS7
- NFV Powered!

Subscribe and follow us below



201-618-7629

kevins@gt.partners

www.gt.partners

Product Line Applications



 BENDnFLEX™



All varieties of stock and customer cables:

- BendnFlex Fiber Cables
- Copper Cables
- Direct Attached Cables

Modular Pre-Termination Management Solutions:

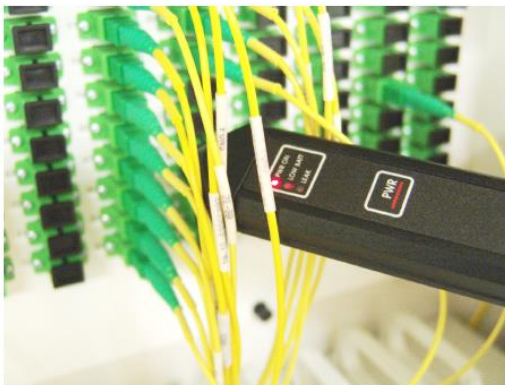
- Front or rear cassette modules, 288 LC Fiber Ports
- 20G, 100G and beyond
- Telcordia certified design



Note: Photos may vary from actual product

FEATURES

- Full featured light source
- Rugged aluminum packaging
- Audio / Visual leak detection
- Pocket size probe
- Waterproof carry case
- Two year warranty



Subscribe and follow us below



201-618-7629

kevins@gt.partners

www.gt.partners

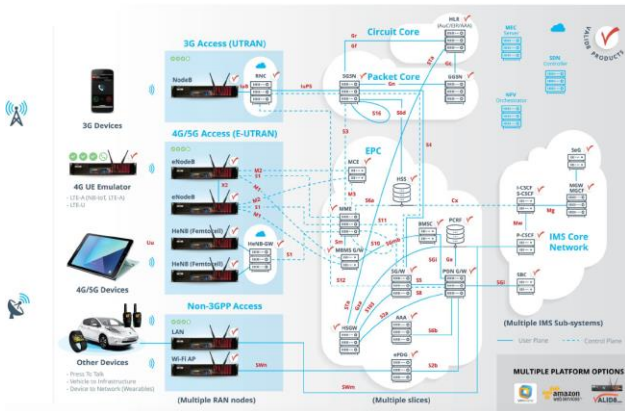
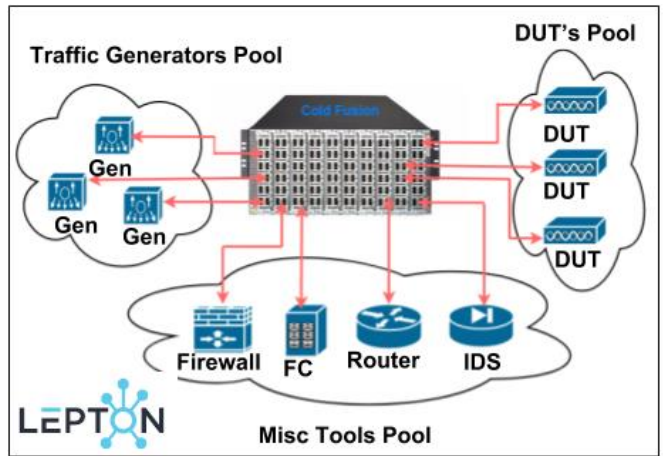
Product Line Applications



End Point Testing

Full Lab Automation:

- HW/SW Automation
- L4-7 Testing
- Analysis Solutions
- Network Impairment
- Protocol Testing



Full Wireless Testing

- UE and Actual Handset Testing
- Element emulation
- Protocol Conformance
- Feature Testing
- Load Testing

Subscribe and follow us below

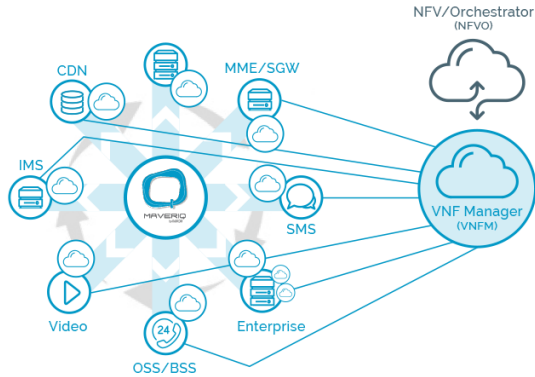


201-618-7629

kevins@gt.partners

www.gt.partners

Enterprise Monitoring Applications

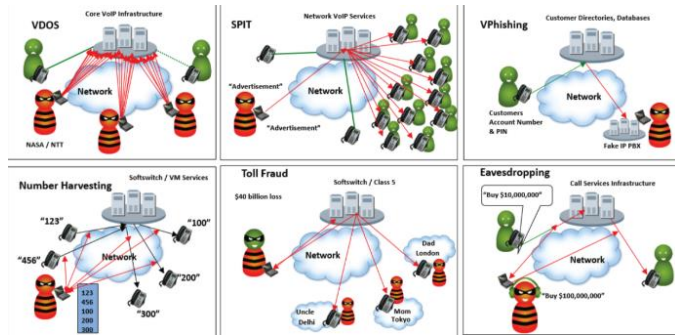


Complete Wireless Service Monitoring:

- Control and User plane service monitoring
- View in to virtual network elements
- Reporting, alarming, deep packet inspection

Fraud, Analytics, Security Monitoring:

- REALtime VoIP Fraud, Analytics, Troubleshooting



Data and Wifi:

- Big Data Monitoring
- Wifi readiness and troubleshooting
- Report and analytics

Subscribe and follow us below



201-618-7629

kevins@gt.partners

www.gt.partners